



GOTM

CARE

User Manual
Rev 002

Notice

Summa reserves the right to modify the information, contained in this User Manual, at any time without prior notice. Unauthorized copying, modification, distribution or display is prohibited. All rights reserved.

Copyright © Summa NV

Contact Information

All inquiries, comments or suggestions concerning this and other Summa manuals should be directed to:

Summa, nv
Rochesterlaan 6
B-8470 GISTEL
Belgium

www.summa.com

Summa America
8517 W. Washington Street Suite 101
Indianapolis, IN 46231
USA

www.summa.com/en-us

Revision history

Version	Reason for modification	Publication date	Author
001	Original version	06 September 2022	A.L.
002	Update for revision 2.2	November 2024	WVRB, AL

Table of Contents

1	Installation	4
2	Standard program.....	4
3	Ribbon.....	5
3.1	Media.....	5
3.2	Actions.....	6
3.3	User Configuration	6
3.4	Info	6
3.5	Monitor	7
4	Action/Test sets	8
4.1	Predefined test sets.....	8
4.2	List of available actions	9
4.2.1	Device	9
4.2.2	Vision camera	10

The GoCare software allows upgrading the laser cutter firmware, making device and Vision camera backups, and restoring machine settings.

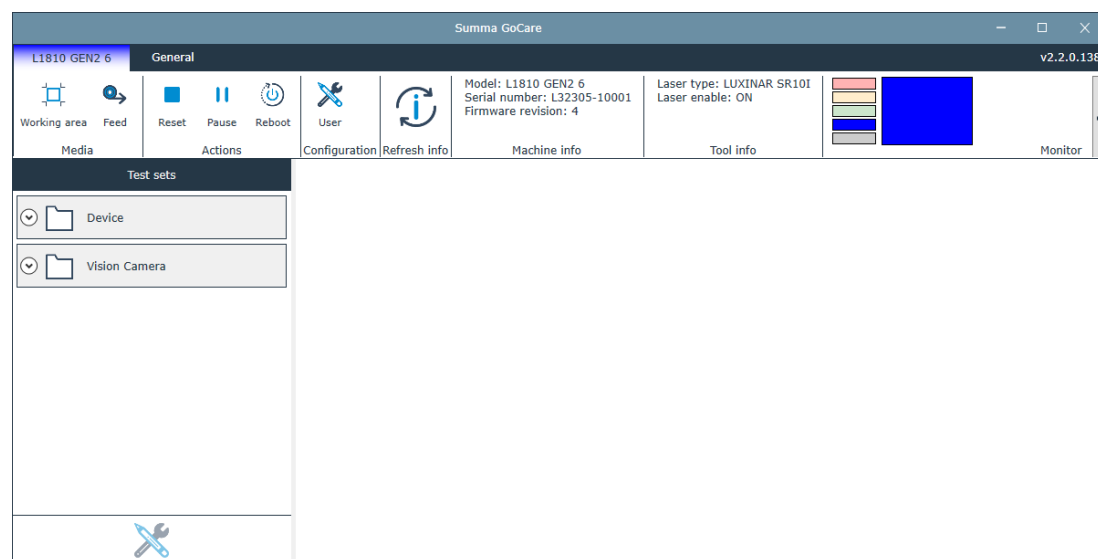
1 INSTALLATION

Download the GoCare software via <https://www.summa.com/en/support/software-firmware/>.

2 STANDARD PROGRAM

The window of Summa GoCare has 2 main areas:

- The ribbon;
- A window with the predefined actions/test sets at the left side.

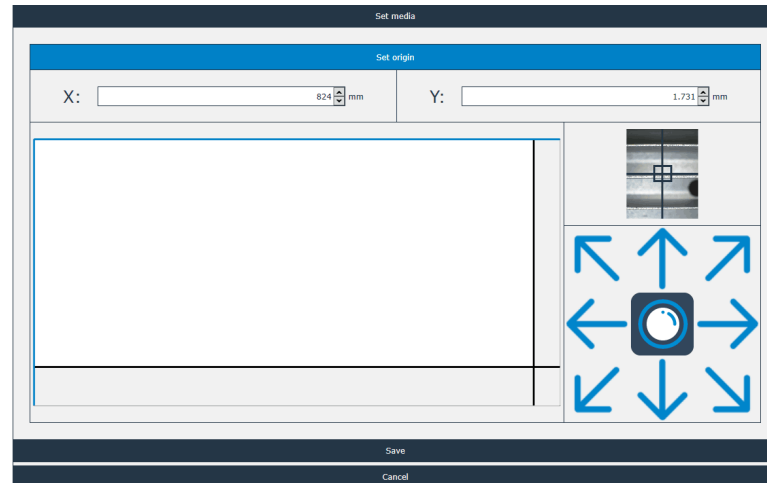



3 RIBBON

3.1 Media



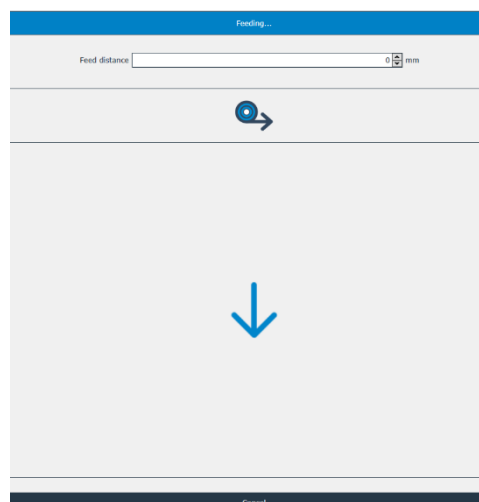
Click the **Working area** icon to set the origin and size. The following window opens:





Use the camera image on screen or the laser nozzle on the machine as a reference. Click  to toggle between these two. Use the arrows, fill in the values or click in the area to set the media size. Click **Save** or **Cancel**.






Click the **Feed** icon to open the feed media window.

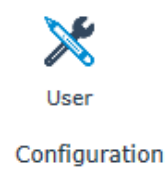


Use the up and down arrows or fill in a value to set the desired feed distance, then press  to execute, or simply click and hold  to feed continuously.

3.2 Actions

-  **Reset** Click **Reset** for stopping the current job.
-  **Pause** Click **Pause** for pausing the current job.
-  **Reboot** Click **Reboot** for a warm reset (similar to rebooting, without having to switch off and on).

3.3 User configuration




Click **User** to set some parameters that will be used when initiating a test or calibration routine from the program GoCare. These settings will not be used for jobs started from the program GoProduce Laser Edition. This program will overwrite them.

Parameters that can be set:

Editing device user settings.	
LASER ENABLE	OFF
FEED VELOCITY	100
LASER MIN	10
LASER MAX	100
VELOCITY	1000
FEED DISTANCE	3,000
QUALITY LEVEL	QUALITY
Save	

3.4 Info

Model: L1810 GEN2 6 Serial number: L32305-10001 Firmware revision: 3	Laser type: LUXINAR SR10I Laser enable: OFF	
Machine info	Tool info	Refresh info

The first info field displays the info on the type of laser cutter and the revision. The second info field displays the type of laser. If the fields are not filled in, then click on **Refresh info**.

3.5 Monitor

The monitor gives an idea of the status of the cutter. Sometimes a message can appear to the right of the larger coloured rectangle to get the operators attention.



Idle Mode:

The cutter is in idle mode, waiting for user input or ready to start a job.



Warning:

The operator is requested to check the status of the cutter and, if necessary, take action to resolve the issue.



Error:

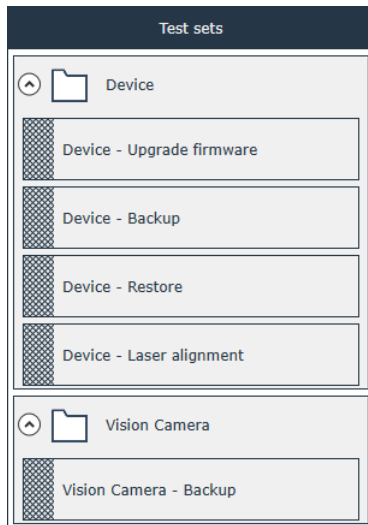
An error has occurred causing the cutter to become non-operational. The error must be resolved first. Intervention is required.



In Operation:

The cutter is currently actively performing a task or operation (loading, cutting,...).

4 ACTION/TEST SETS



Test sets are ready-to-go workflows to upgrade the cutter firmware, back up and restore device settings and back up Vision camera parameters.



NOTE: Select a test set by clicking the cross-hatched area before the test set name.

4.1 Predefined test sets

When Summa GoCare is installed, certain pre-defined test sets are installed by default:

- Device – Upgrade firmware
- Device – Backup
- Device – Restore
- Device – Laser alignment
- Vision Camera – Backup

If you are using the predefined test sets, it is important to know what they do. Right-click in the cross-hatched area in front of the test set name so the structure of the test set appears. Then, by clicking in the cross-hatched area in front of the test set action, you can view the specific properties of that action.



NOTE: When performing a test set, simply follow the instructions on the screen.



ATTENTION: Do not power off the laser cutter or disconnect it from the host computer during these procedures.

4.2 List of available actions

4.2.1 Device

Upgrade firmware: Before upgrading the firmware, you will need the latest firmware revision. You can download it from <https://www.summa.com/en/support/software-firmware/>.



NOTE: To find out if a firmware upgrade is possible, check the cutter's current firmware version in the info section in the ribbon and compare it to the latest firmware revision available on our website page <https://www.summa.com/en/support/software-firmware/>.

Backup: This allows making a backup of the device settings (e.g. speed, laser power,...).

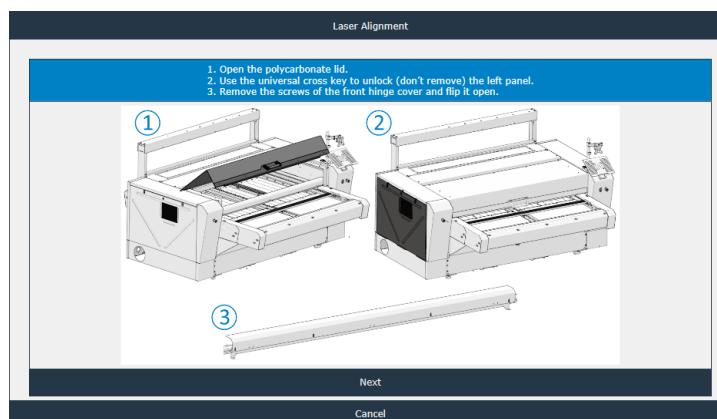
- **Storage:** You can save the backup file in the *Summa cloud storage* or *Local*. When choosing *Summa cloud storage*, an internet connection is necessary. Backups that are saved in the *Summa cloud storage* cannot be deleted and are overwritten if they are made on the same day so that only one backup per day (the last one) is saved. Backups that are saved on your own computer (*Local*) can be fully managed by you.

Restore: This allows performing a restore of earlier saved device parameters.

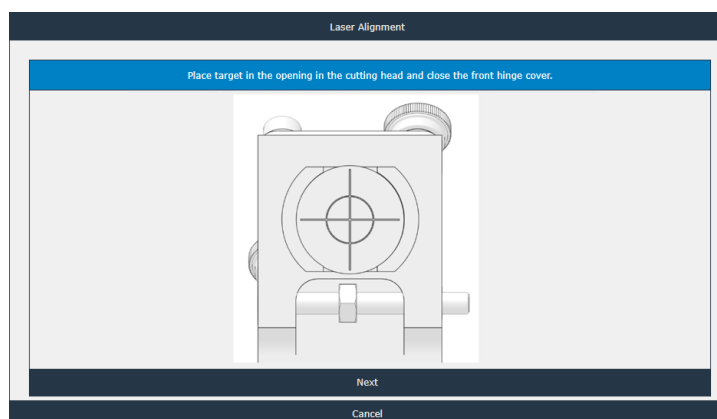
- **Storage:** Be sure to select where the backup you want to restore, is saved (*Summa cloud storage* or *Local*).
- **File path:** You need to enter the file path (location) for the downloaded firmware file here.

Laser alignment: This launches a wizard explaining how to align the mirrors in the laser cutters. Follow the instructions on screen.

Step 1



Step 2



...

Backup: This allows making a backup of the Vision camera calibration parameters.

- **Storage:** You can save the backup file in the *Summa cloud storage* or *Local*. When choosing *Summa cloud storage*, an internet connection is necessary. Backups that are saved in the Summa cloud storage cannot be deleted and are overwritten if they are made on the same day so that only one backup per day (the last one) is saved. Backups that are saved on your own computer (*Local*) can be fully managed by you.